

MA-RCX Series

Hydraulic remote control 4 service ports,
single control lever



Product Features

Hydraulic remote control **MA-RCX** belongs to the wide Range of **Maxma Fluid Power Inc** and is capable of working with a maximum input pressure of 100 bar (1450 psi) at a maximum oil input capacity of 12 l/min. (3.2 gpm) Low operating efforts, low energy consumption and low maintenance makes these hydraulic remote controls **MA-RCX** ideal for piloting remote control directional valves, variable displacement pumps and motors, auxiliary valves, frictions and hydraulic brakes. The lever anti-swaying system and the ergonomic handle provide great sensitivity while manoeuvring and make use very comfortable for the operator.



Working Conditions

Recommended Oil Viscosity Range	15 cSt to 75 cSt
Recommended Fluid Temperature Range	-20 to +80°C
Oil Filtration	$\mu \leq 30$
Maximum Contamination Level	Class 10 (NAS 1638) 19/16 (ISO 4406)

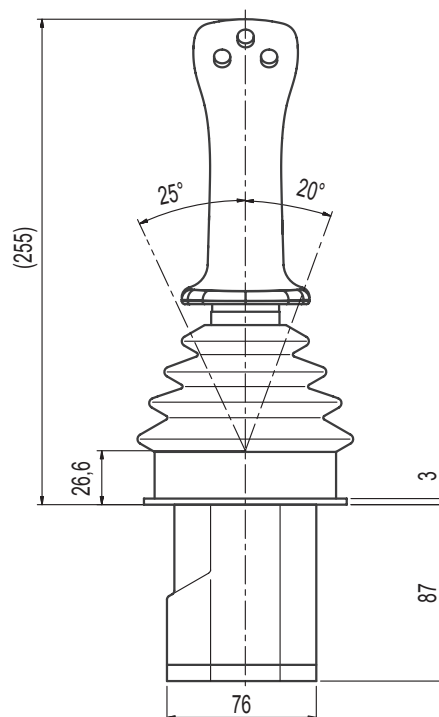
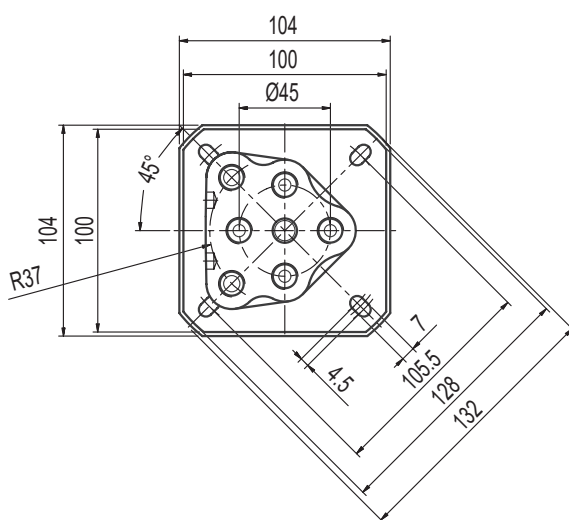
Technical Specifications

Nominal Flow	12 l/min	3.2 US gpm
Hysteresis	0.5 bar	7.25 psi
Maximum Working Pressure	100 bar	1450 psi
Maximum Back Pressure	3 bar	44 psi

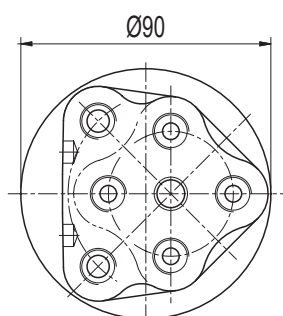
We reserve the right to introduce improvements and make necessary changes without prior notice.

Dimensional drawing

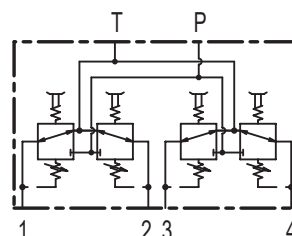
Overall dimensions



Holder hole dimensions



Hydraulic diagram



Weight

2,90 Kg (6,39 lb)