

AXIAL PISTON MOTOR

PMF SERIES

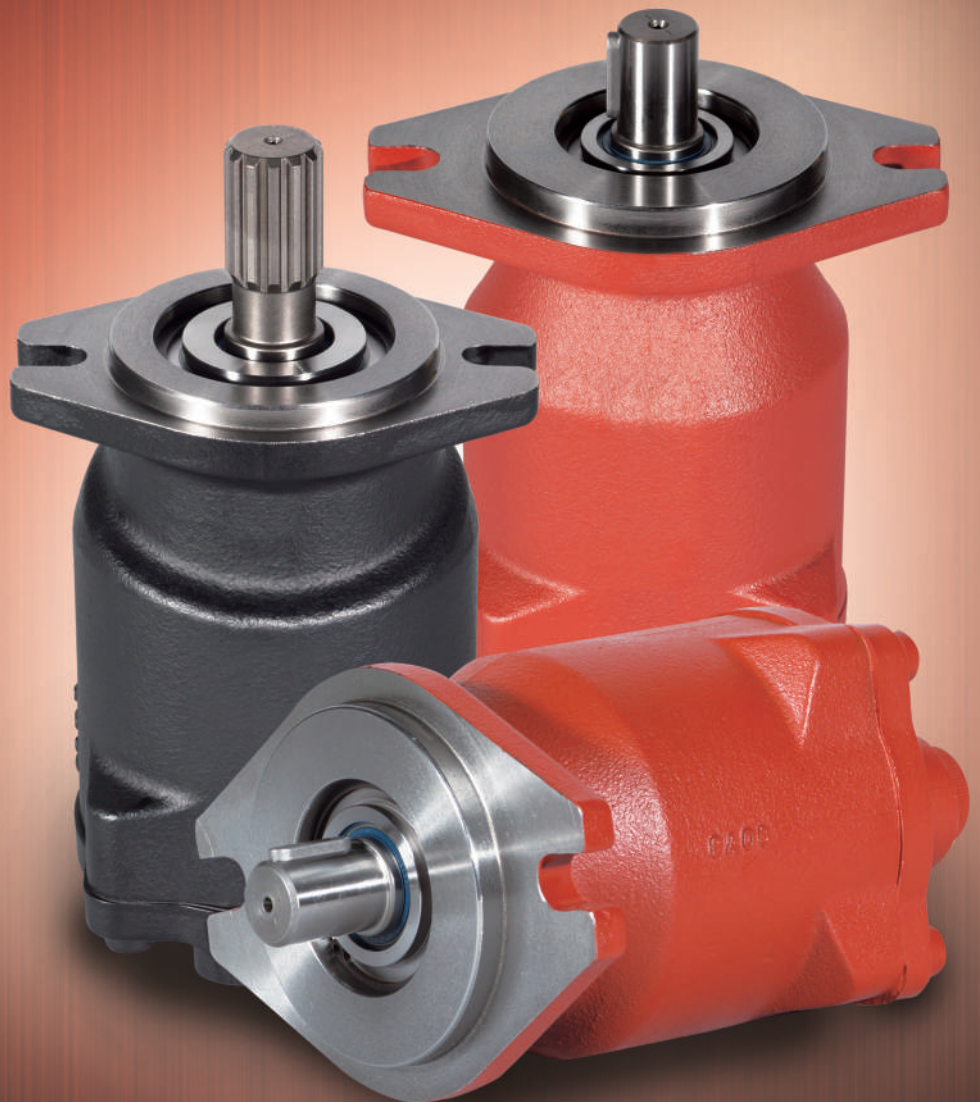
PMF

The PMF Series is an axial piston motor which is used for traveling, swing and winching of industrial machinery and industrial vehicles.

PMF Series is a fixed displacement swash type piston motor which combines with weight reduction, down-size and high durability. PMF Series is designed with a simple structure to keep the outstanding durability against rapid acceleration/deceleration, torque changes by frequent rotation/reverse rotation, and pressure variation.

PMF系列是旋转斜盘式活塞马达，可用于建筑机械，工业车辆的行驶、旋回、绞车用途。

PMF系列是兼有轻型、小型、高耐久性的固定排量型斜盘式活塞马达。它具有简单的结构，以保持对突然加速/减速、由于频繁的正向/反向旋转引起的扭矩波动以及压力变化时的良好耐久性。

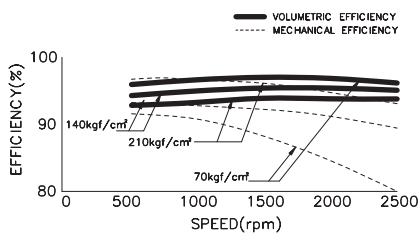


PMF-20-01/25-01

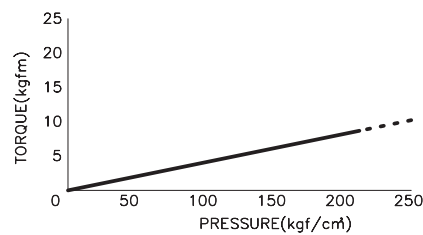
► Specification

MODEL	DISPLACEMENT (cc/rev)	PRESSURE(kgf/cm ²)		TORQUE(kgf·m)		SPEED (rpm)	WEIGHT (kg)
		RATED	MAX	RATED	MAX		
PMF-20-01	20	210	250	6.6	8	3000	7.5
PMF-25-01	25.7	210	250	8.6	10.2	3000	7.5

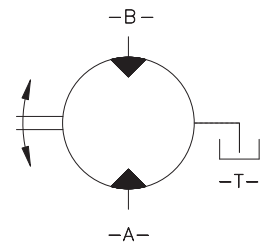
► Performance Curve



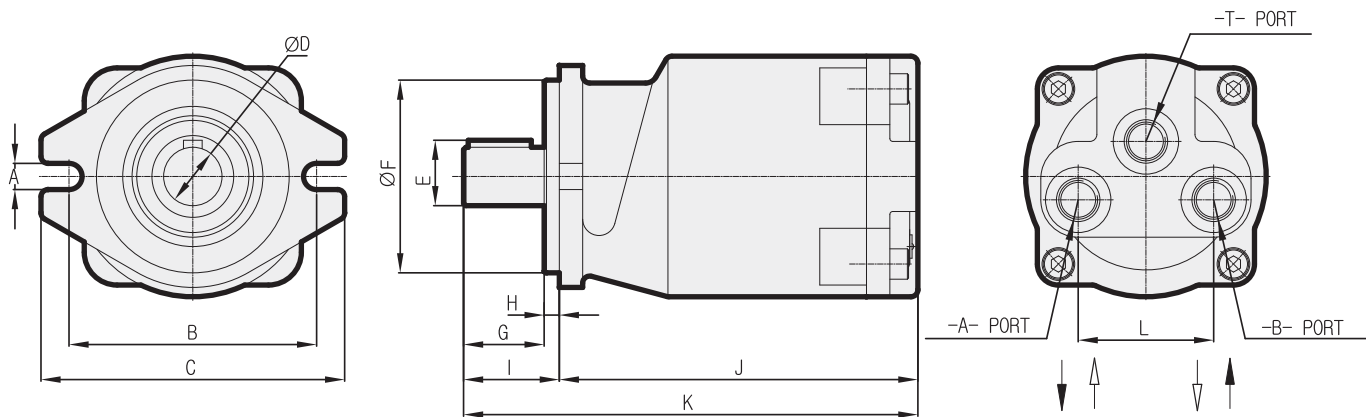
► Output Torque



► Symbol



► Dimensions



MODEL	A	B	C	D	E	F	G	H	I	J	K	L
PMF-20-01-K	11.2	106	130	Ø24	27	Ø82.5	34.5	6.5	41	153.5	194.5	58
PMF-25-01-S	11.2	106	130	Ø24.667	Ø24.667	Ø82.5	51.3	6.5	57.8	153.5	211.3	58
PMF-25-01-K	11.2	106	130	Ø24	27	Ø82.5	34.5	6.5	41	153.5	194.5	58

► Port Size

MODEL	INLET / OUTLET PORT	CASE DRAIN PORT
PMF-20-01-K	PF 3/8	PF 3/8
PMF-25-01-S	PF 3/8	PF 3/8
PMF-25-01-K	PF 3/8	PF 3/8

► Dimensions of Shaft

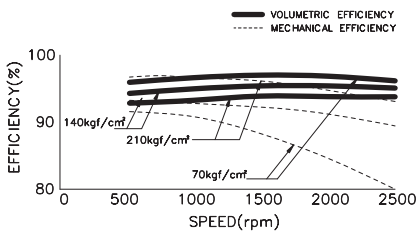
MODEL	NO. OF TEETH	PRESSURE ANGLE	MODULE	RULE
PMF-20-01-K	7 X 7 X 27			KEY TYPE
PMF-25-01-S	13	20°	1.667	JIS
PMF-25-01-K	7 X 7 X 27			KEY TYPE

PMF-25-01

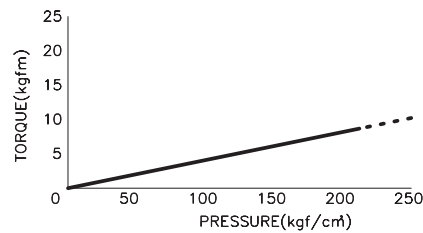
► Specification

MODEL	DISPLACEMENT (cc/rev)	PRESSURE(kgf/cm ²)		TORQUE(kgf·m)		SPEED (rpm)	WEIGHT (kg)
		RATED	MAX	RATED	MAX		
PMF-25-01	25.7	210	250	8.6	10.2	3000	7.5

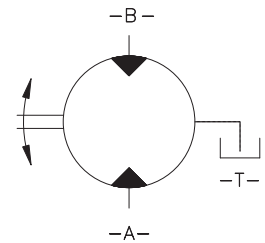
► Performance Curve



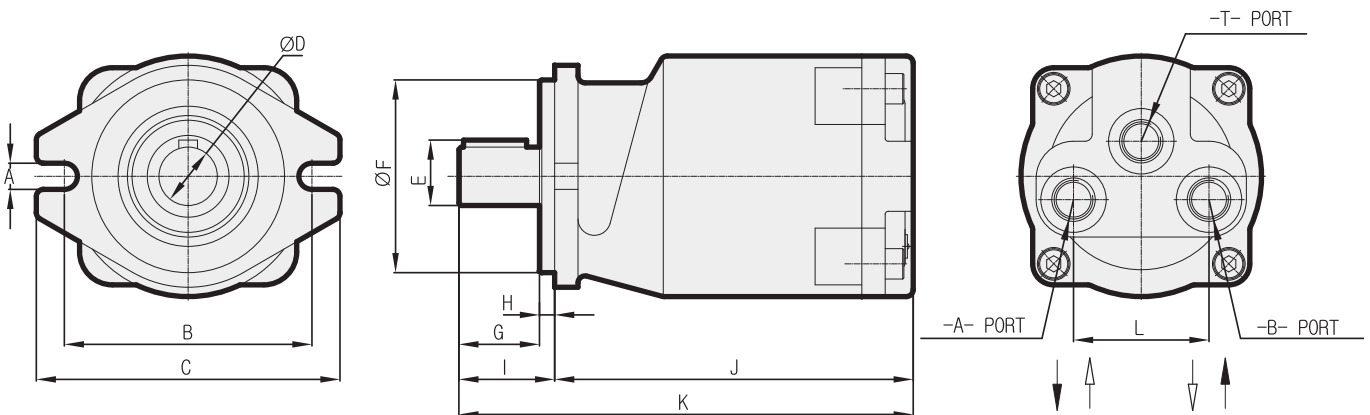
► Output Torque



► Symbol



► Dimensions



MODEL	A	B	C	D	E	F	G	H	I	J	K	L
PMF-25-01-K,D	11.2	106	130	Ø25	28	Ø82.5	34.5	6.5	41	153.5	194.5	58
PMF-25-01-S,F	11.2	106	130	Ø24.667	Ø24.667	Ø82.5	40.5	6.5	47	153.5	200.5	58

► Port Size

MODEL	INLET / OUTLET PORT	CASE DRAIN PORT
PMF-25-01-K,D	PF 3/8	PF 3/8
PMF-25-01-S,F	PF 3/8	PF 3/8

► Dimensions of Shaft

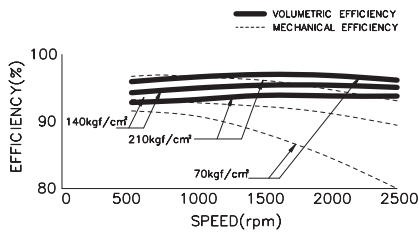
MODEL	NO. OF TEETH	PRESSURE ANGLE	MODULE	RULE
PMF-25-01-K,D	8 X 7 X 27			KEY TYPE
PMF-25-01-S,F	13	20°	1.667	JIS

PMF-25-02/03

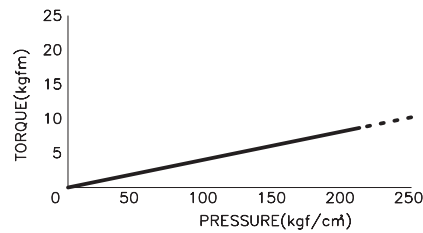
► Specification

MODEL	DISPLACEMENT (cc/rev)	PRESSURE(kgf/cm ²)		TORQUE(kgf·m)		SPEED (rpm)	WEIGHT (kg)
		RATED	MAX	RATED	MAX		
PMF-25-02/03	25.7	210	250	8.6	10.2	3000	8

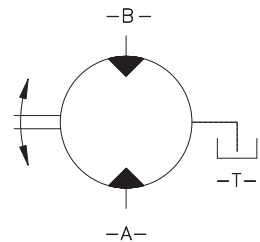
► Performance Curve



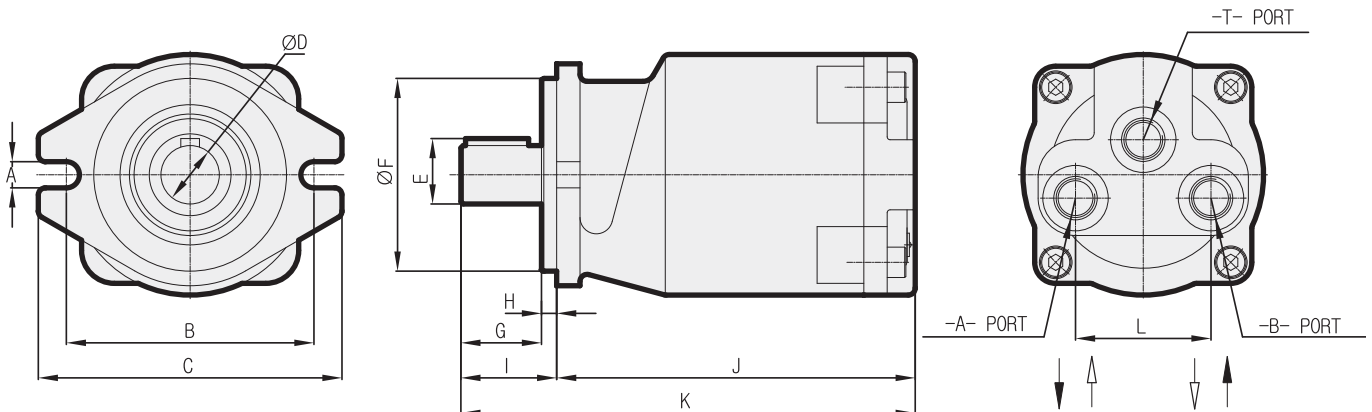
► Output Torque



► Symbol



► Dimensions



MODEL	A	B	C	D	E	F	G	H	I	J	K	L
PMF-25-02-K	15	146	170	Ø24	27	Ø101.6 ~ Ø101.549	31.9	9.1	41	153.5	194.5	58
PMF-25-02-S	15	146	170	Ø24.667	Ø24.667	Ø101.6 ~ Ø101.549	41	9.1	50.1	153.5	203.3	58
PMF-25-03-K	15	146	170	Ø24	27	Ø101.6 ~ Ø101	32.1	9.1	41.2	153.5	194.7	58

► Port Size

MODEL	INLET / OUTLET PORT	CASE DRAIN PORT
PMF-25-02-K	PF 3/8	PF 3/8
PMF-25-02-S	PF 3/8	PF 3/8
PMF-25-03-K	PF 1/2	PF 1/4

► Dimensions of Shaft

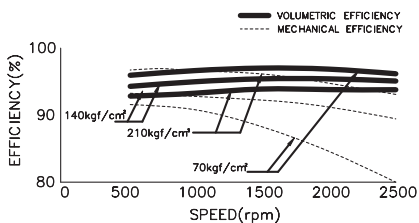
MODEL	NO. OF TEETH	PRESSURE ANGLE	MODULE	RULE
PMF-25-02-K	7 X 7 X 27			KEY TYPE
PMF-25-02-S	13	20°	1.667	JIS
PMF-25-03-K	7 X 7 X 27			KEY TYPE

PMF-25-05/06/07

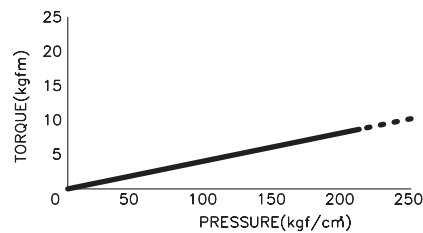
► Specification

MODEL	DISPLACEMENT (cc/rev)	PRESSURE(kgf/cm ²)		TORQUE(kgf·m)		SPEED (rpm)	WEIGHT (kg)
		RATED	MAX	RATED	MAX		
PMF-25-05/06/07	25.7	210	250	8.6	10.2	3000	8

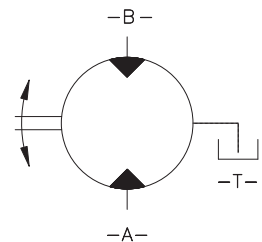
► Performance Curve



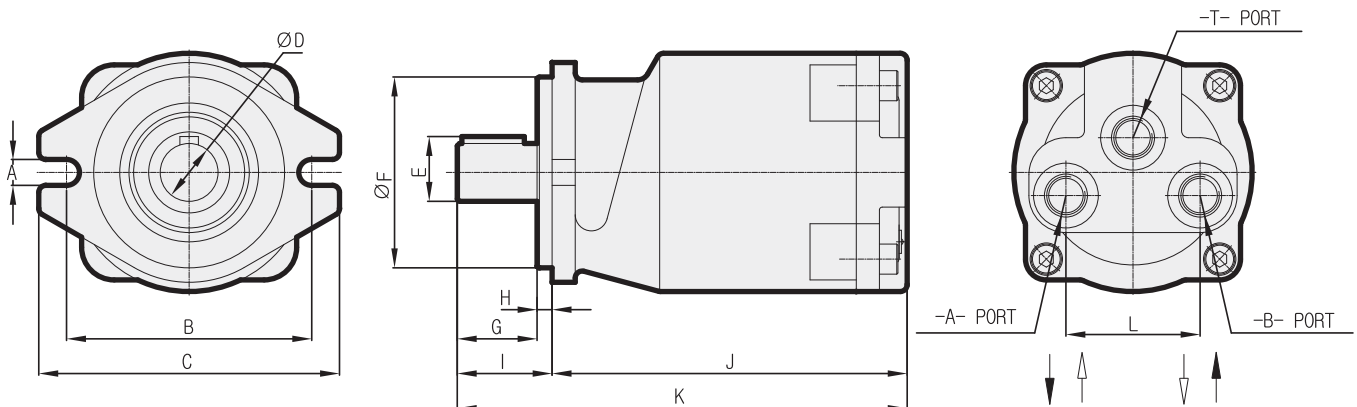
► Output Torque



► Symbol



► Dimensions



MODEL	A	B	C	D	E	F	G	H	I	J	K	L
PMF-25-05-S	15	146	170	Ø24.667	Ø24.667	Ø101.6~Ø101.549	38.2	9.1	47.3	153.5	200.8	58
PMF-25-06-S	11.2	106.3	130	Ø24.667	Ø24.667	Ø82.55	40.8	6.5	47.3	153.5	200.8	58
PMF-25-07-K	11.2	106	130	Ø25	28	Ø82.5	43.5	6.5	50	153.5	203.5	58

► Port Size

MODEL	INLET / OUTLET PORT	CASE DRAIN PORT
PMF-25-05-S	PF 3/8	PF 3/8
PMF-25-06-S	PF 3/8	PF 3/8
PMF-25-07-K	PF 3/8	PF 3/8

► Dimensions of Shaft

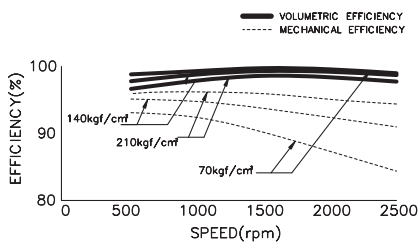
MODEL	NO. OF TEETH	PRESSURE ANGLE	MODULE	RULE
PMF-25-05-S	13	20°	1.667	JIS
PMF-25-06-S	13	20°	1.667	JIS
PMF-25-07-K	7 X 7 X 31.5			KEY TYPE

PMF-36-01/04

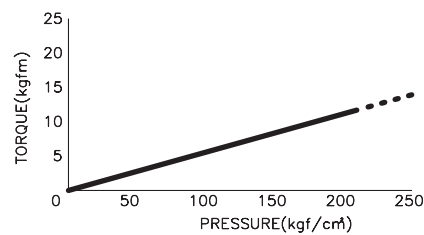
► Specification

MODEL	DISPLACEMENT (cc/rev)	PRESSURE(kgf/cm ²)		TORQUE(kgf·m)		SPEED (rpm)	WEIGHT (kg)
		RATED	MAX	RATED	MAX		
PMF-36-01	36	210	250	12	14.3	3000	10.4
PMF-36-04	36	210	250	12	14.3	2800	10.4

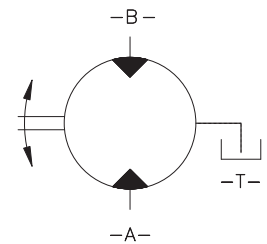
► Performance Curve



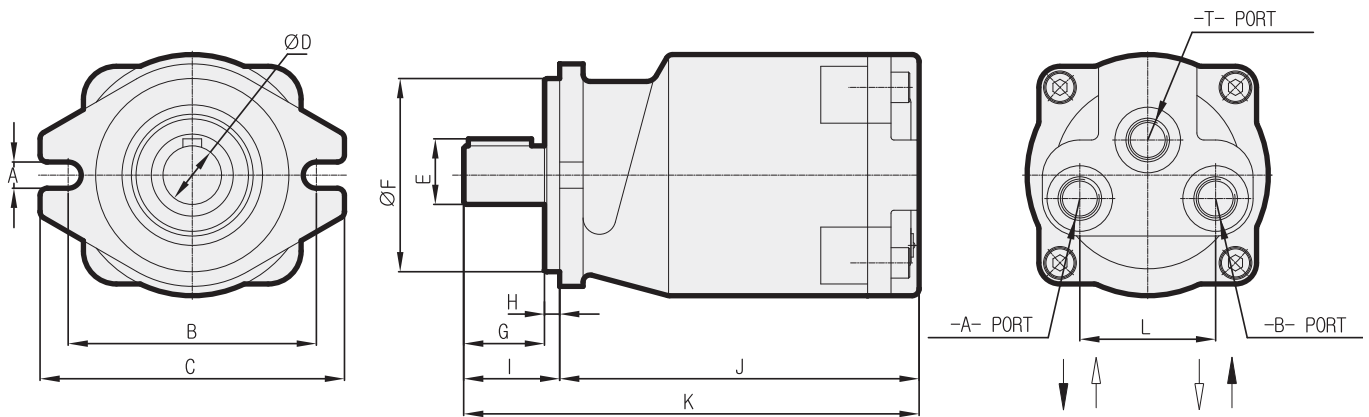
► Output Torque



► Symbol



► Dimensions



MODEL	A	B	C	D	E	F	G	H	I	J	K	L
PMF-36-01-K	15	146	170	Ø24	27	Ø101.6~Ø101.549	32.1	9.1	41.2	172	213.2	67
PMF-36-01-S	15	146	170	Ø24.667	Ø24.667	Ø101.6~Ø101.549	48.7	9.1	57.8	172	229.8	67
PMF-36-04-S	11.2	106	130	Ø24.667	Ø24.667	Ø82.55	50	6.5	56.5	172	228.5	67

► Port Size

MODEL	INLET / OUTLET PORT	CASE DRAIN PORT
PMF-36-01-K	PF 1/2	PF 3/8
PMF-36-01-S	PF 1/2	PF 3/8
PMF-36-04-S	PF 1/2	PF 3/8

► Dimensions of Shaft

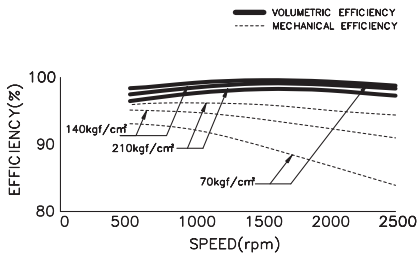
MODEL	NO. OF TEETH	PRESSURE ANGLE	MODULE	RULE
PMF-36-01-K	7 X 7 X 27			KEY TYPE
PMF-36-01-S	13	20°	1.667	JIS
PMF-36-04-S	13	20°	1.667	JIS

PMF-39-01/02

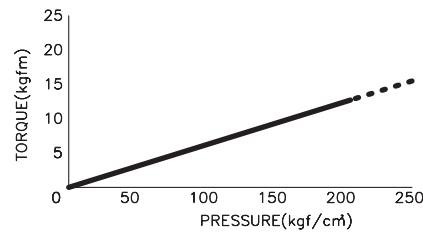
Specification

MODEL	DISPLACEMENT (cc/rev)	PRESSURE(kgf/cm ²)		TORQUE(kgf·m)		SPEED (rpm)	WEIGHT (kg)
		RATED	MAX	RATED	MAX		
PMF-39-01/02	39	210	250	13	15.5	2500	10.4

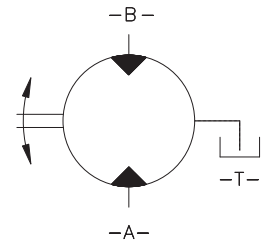
Performance Curve



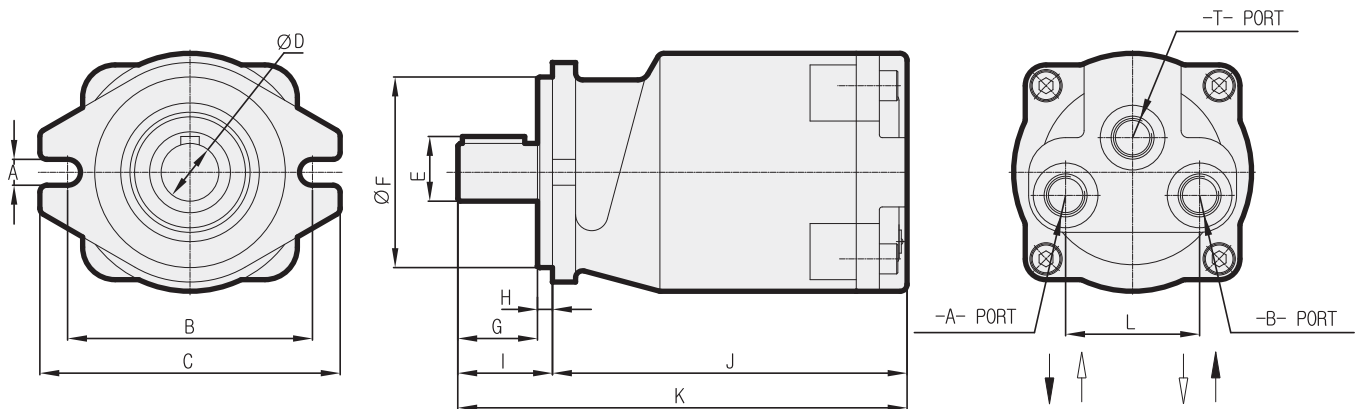
Output Torque



Symbol



Dimensions



MODEL	A	B	C	D	E	F	G	H	I	J	K	L
PMF-39-01-K	15	146	170	Ø24	27	Ø101.6 ~ Ø101.549	32.1	9.1	41.2	172	213.2	67
PMF-39-01-S	15	146	170	Ø24.667	Ø24.667	Ø82.55	32.1	9.1	41.2	172	213.2	67
PMF-39-02-K	15	146	170	Ø25	28	Ø101.6 ~ Ø101.549	32.1	9.1	41.2	172	213.2	67

Port Size

MODEL	INLET / OUTLET PORT	CASE DRAIN PORT
PMF-39-01-K	PF 1/2	PF 3/8
PMF-39-01-S	PF 1/2	PF 3/8
PMF-39-02-K	PF 1/2	PF 3/8

Dimensions of Shaft

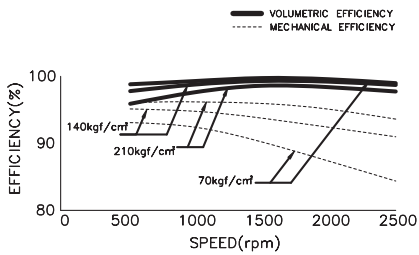
MODEL	NO. OF TEETH	PRESSURE ANGLE	MODULE	RULE
PMF-39-01-K	7 X 7 X 27			KEY TYPE
PMF-39-01-S	13	20°	1.667	JIS
PMF-39-02-K	7 X 7 X 27			KEY TYPE

PMF-43-01/02/03/05

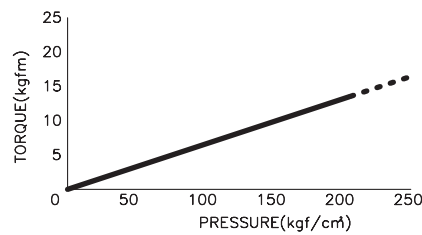
► Specification

MODEL	DISPLACEMENT (cc/rev)	PRESSURE(kgf/cm ²)		TORQUE(kgf·m)		SPEED (rpm)	WEIGHT (kg)
		RATED	MAX	RATED	MAX		
PMF-43-01	43	210	250	14.3	17.1	3000	10.4
PMF-43-02/03/05	43.2	210	250	14.3	17.2	2800	10.4

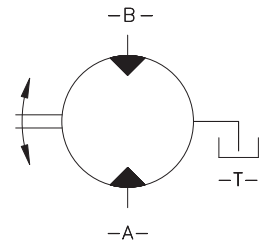
► Performance Curve



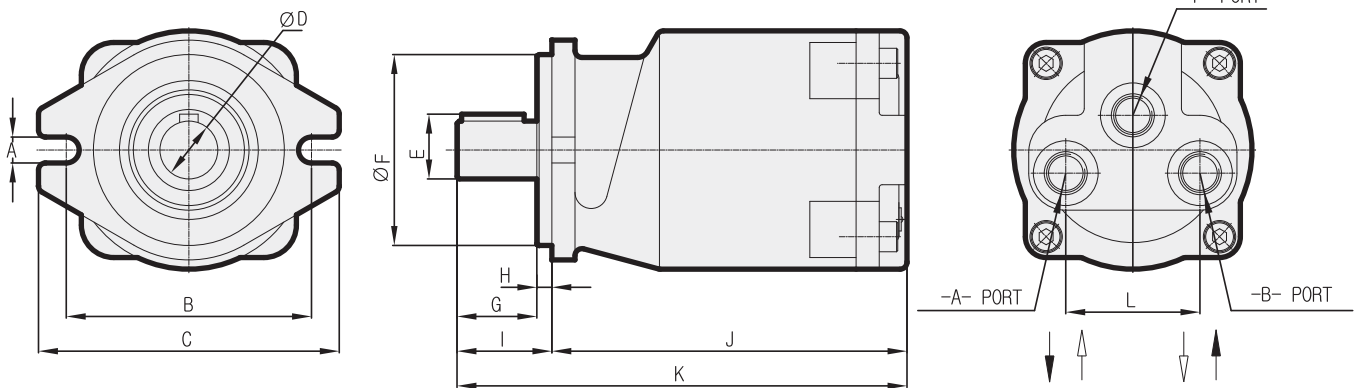
► Output Torque



► Symbol



► Dimensions



MODEL	A	B	C	D	E	F	G	H	I	J	K	L
PMF-43-01-K	13	146	170	Ø24	27	Ø101.6~Ø101.549	32.1	9.1	41.2	172	213.2	67
PMF-43-02-K	11.2	106	130	Ø22	25	Ø82.55	39.5	6.5	46	172	218	67
PMF-43-03-S	11.2	106	130	Ø24.667	Ø24.667	Ø82.55	50	6.5	56.5	172	228.5	67
PMF-43-05-K	11.2	106	130	Ø25	28	Ø82.55	43.5	6.5	50	172	222	67

► Port Size

MODEL	INLET / OUTLET PORT	CASE DRAIN PORT
PMF-43-01-K	PF 1/2	PF 3/8
PMF-43-02-K	PF 1/2	PF 3/8
PMF-43-03-S	PF 1/2	PF 3/8
PMF-43-05-K	PF 1/2	PF 3/8

► Dimensions of Shaft

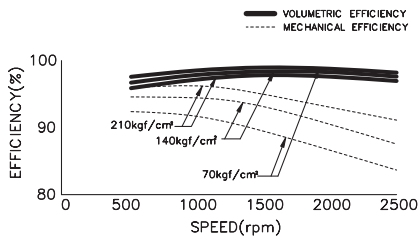
MODEL	NO. OF TEETH	PRESSURE ANGLE	MODULE	RULE
PMF-43-01-K	7 X 7 X 27			KEY TYPE
PMF-43-02-K	7 X 7 X 32			KEY TYPE
PMF-43-03-S	13	20°	1.667	JIS
PMF-43-05-K	7 X 7 X 31.5			KEY TYPE

PMF-47-01/11

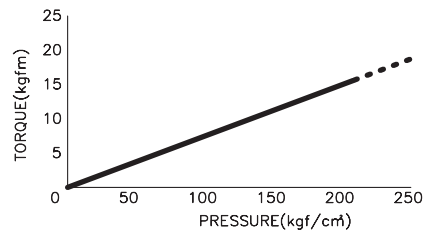
► Specification

MODEL	DISPLACEMENT (cc/rev)	PRESSURE(kgf/cm ²)		TORQUE(kgf·m)		SPEED (rpm)	WEIGHT (kg)
		RATED	MAX	RATED	MAX		
PMF-47-01/11	47	210	250	15.7	18.7	3000	10.4

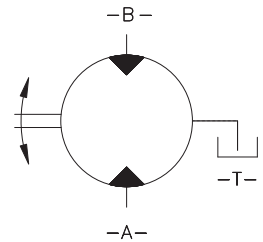
► Performance Curve



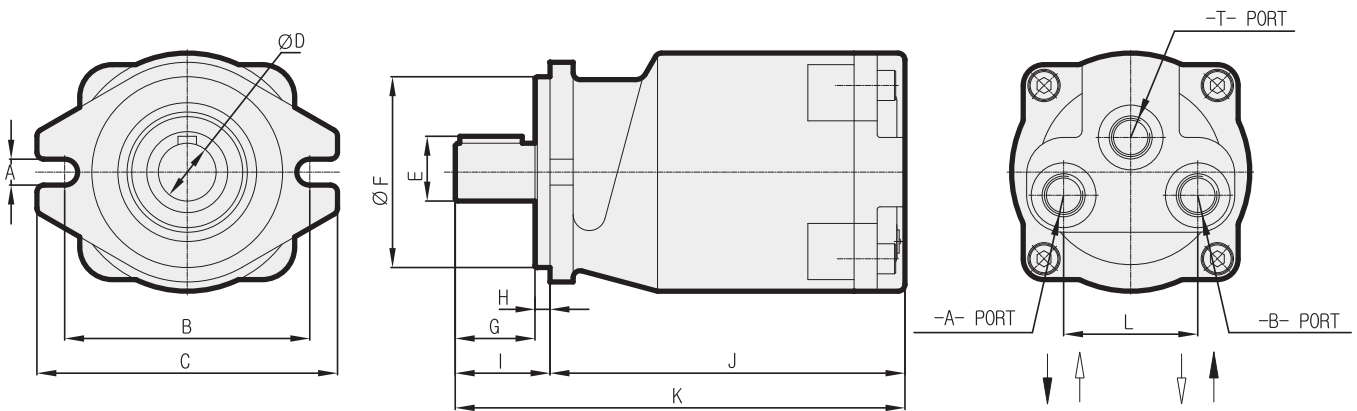
► Output Torque



► Symbol



► Dimensions



MODEL	A	B	C	D	E	F	G	H	I	J	K	L
PMF-47-01-K	15	146	170	Ø24	27	Ø101.6~Ø101.549	32.1	9.1	41.2	172	213.2	67
PMF-47-01-S	15	146	170	Ø24.667	Ø24.667	Ø101.6~Ø101.549	51.5	9.1	60.6	172	232.6	67
PMF-47-11-K	11.2	106	130	Ø25	28	Ø82.55	48.5	6.5	55	172	227	67

► Port Size

MODEL	INLET/OUTLET PORT	CASE DRAIN PORT
PMF-47-01-K	PF 1/2	PF 3/8
PMF-47-01-S	PF 1/2	PF 3/8
PMF-47-11-K	PF 1/2	PF 3/8

► Dimensions of Shaft

MODEL	NO. OF TEETH	PRESSURE ANGLE	MODULE	RULE
PMF-47-01-K	7 X 7 X 27			KEY TYPE
PMF-47-01-S	13	20°	1.667	JIS
PMF-47-11-K	8 X 7 X 38			KEY TYPE