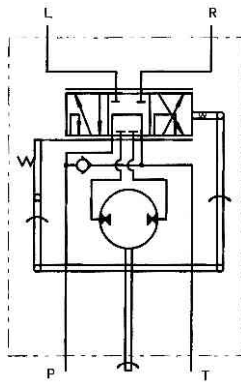


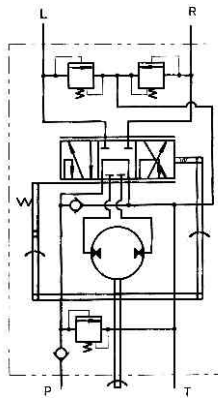


DESCRIPTION OF UNIT HSUM :

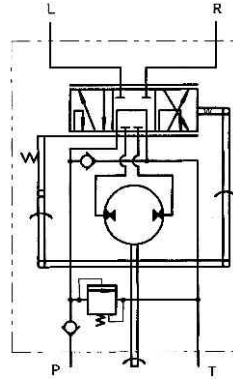
- Series HSUM hydraulic steering unit is the integrated orbital steering with unit 4/5 tooth structure.
- This kind of steering can have check valve, relief valve and chock valve, the structure is small and exquisite, mounting data corresponds to international standard.
- This kind of steering unit is widely used mini vehicles, such as mini forklift mini tractor (and other agricultural machinery), mini earthmoving machinery, mini municipal vehicle, etc.
- It can obtain more steering output torque through input of less power, with features of easy, flexible and reliable operation.



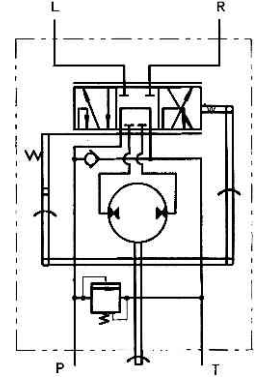
HSUM.../1 Version -1
"Open Center"
Non-Load Reaction



HSUMS.../1 Version -1
"Open Center - Non Load Reaction"
With Built-in Valves



HSUMV.../1 Version -1
"Open Center - Non Load Reaction"
With Built-in Valves

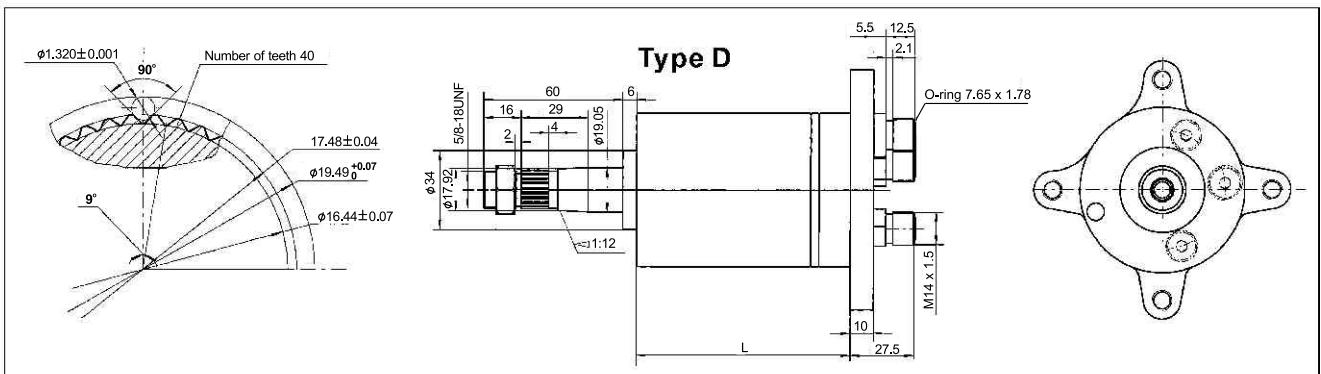
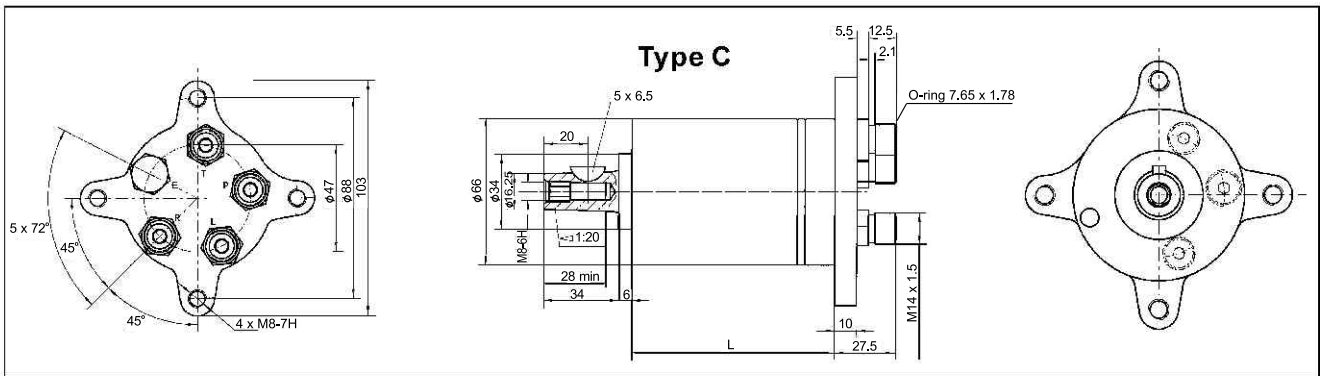
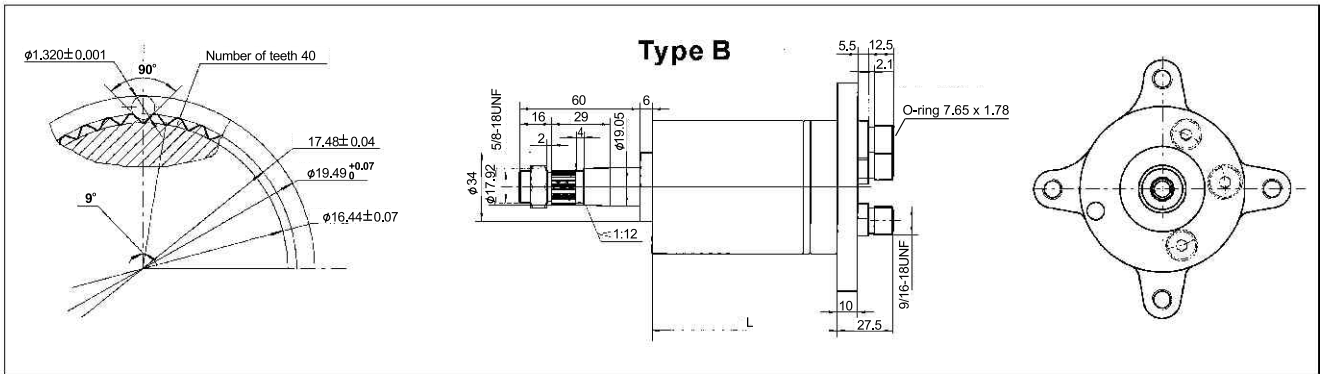
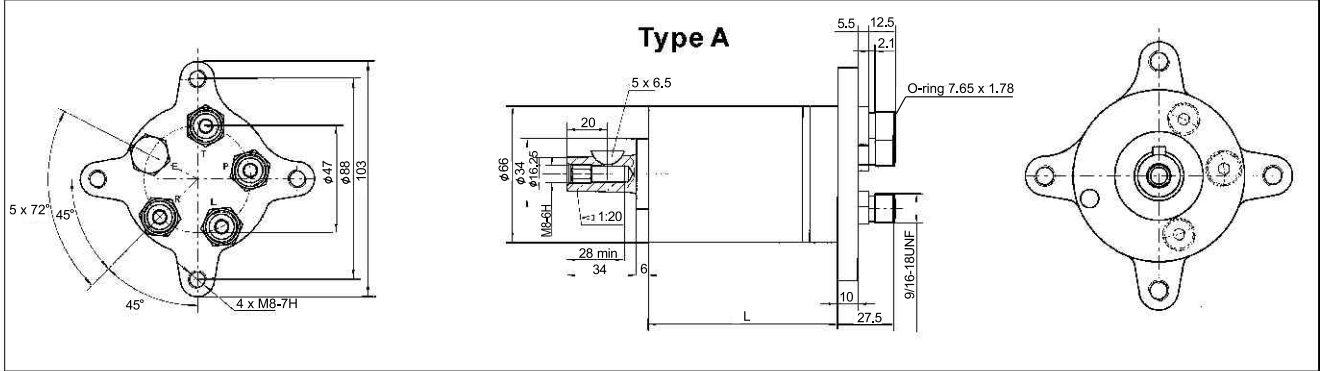


HSUMR.../1 Version -1
"Open Center - Non Load Reaction"
With Built-in Valves

Specifications

Parameters	Type					
	HSUM 20	HSUM 30	HSUM 40	HSUM 50	HSUM 63	HSUM 80
Integrated Valve	S / V / R	S / V / R	S / V / R	S / V / R	S / V / R	S / V / R
Version	1	1	1	1	1	1
Displacement cc/rev (cu.in)	20 (1.22)	32 (1.95)	40 (2.44)	50 (3.05)	63 (3.85)	80 (4.88)
Rated Flow l/min (gpm)	3-20 (.79~5.29)					
Rated Pressure bar (PSI)	125 (1800)					
Relief Valve Pressure Setting bar (PSI)	60 (860)	70 (1000)	80 (1150)	90 (1300)		
Shock Valve Pressure Setting bar (PSI)	120 (1720)	130 (1860)	140 (2000)	150 (2150)		
Max. Cont. Pressure in Line T bar (PSI)	10 (145)					
Max. Torque-Powered Nm (lb.-in.)	1.6 (142)					
D Type Weight kg (lb)	5.75 (12.68)	5.82 (12.83)	5.89 (12.99)	5.96 (13.14)	6.1 (13.45)	6.3 (13.89)
D Type Dimension L mm (in.)	87 (3.425)	92 (3.622)	96 (3.78)	100 (3.937)	105 (4.133)	113 (4.449)

Dimensions and Mounting Data



Ordering Information

	1	2	3	4	5	6
HSUM			/	1	-	

Pos.1 Integrated Valve

- Omit - Without Valve
- S - With Relief Valve, Check Valve, Shock Valve
- V - With Relief Valve, Check Valve
- R - With Relief Valve

Pos.2 Displacement Code

- 20 - 20cc / 1.22 [in.3/r]
- 32 - 32cc / 1.95 [in.3/r]
- 40 - 40cc / 2.44 [in.3/r]
- 50 - 50cc / 3.05 [in.3/r]
- 63 - 63cc / 3.85 [in.3/r]
- 80 - 80cc / 4.88 [in.3/r]

Pos.3 Version Code

- 1 - Open Center - Non Load Reaction

Pos.4 Relief Valve Pressure Settings, bar(PSI)

- 60 - 60 [860]
- 70 - 70 [1000]
- 80 - 80 [1150]
- 90 - 90 [1300]

Pos.5 Mounting Data

- A - Tapered 1:20, key 5 x 6.5
Ports:9/16-18UNF
- B - Tapered 1:12 with 11/16 in-40 Serrations
Ports:9/16-18UNF
- C - Tapered 1:20, key 5 x 6.5
Ports:M14x1.5
- D - Tapered 1:12 with 11/16 in-40 Serrations
Ports:M14 x 1.5

Pos.6 Design Series

- Omit - Factory Only