



# Monobloc Directional Control Valve MB2 Series

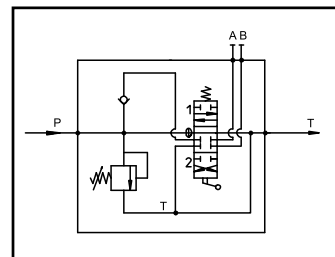


## Features:

- High strength cast-iron.
- Internal load holding check valves.
- High efficiency.
- Parallel circuit.
- Balanced interchangeable spool.
- NBR (BUNA-N) seal (Standard).
- FBR (Viton) seal (option).

## General Specifications

Series	MB2	
Max flow rate	L/min	45
	gpm	12
Max operating pressure	bar	250
	psi	3570
Max back pressure	bar	25
	psi	360
Fluid temperature range with NBR(BUNA-N) seal	°C	- 20 ~ 80
	°F	- 4 ~ 176
Fluid temperature range with FBR(VITON) seal	°C	- 20 ~ 100
	°F	- 4 ~ 212
Ambient temperature range	°C	- 20 ~ 60
	°F	- 4 ~ 140
Oil viscosity (operating range)	mm <sup>2</sup> /s	15 ~ 75
	cSt	15 ~ 75
Oil filtration	μ	<30
Number of Spools		1
Weight	kg(LBS)	1.8 (4)

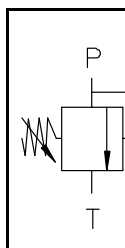


## Pos 2, Type of threads

Code	P-T-A-B
<b>G</b>	G 3/8"
<b>U</b>	3/4-16UNF-2B(SAE 8)
<b>M</b>	M18 x 1.5

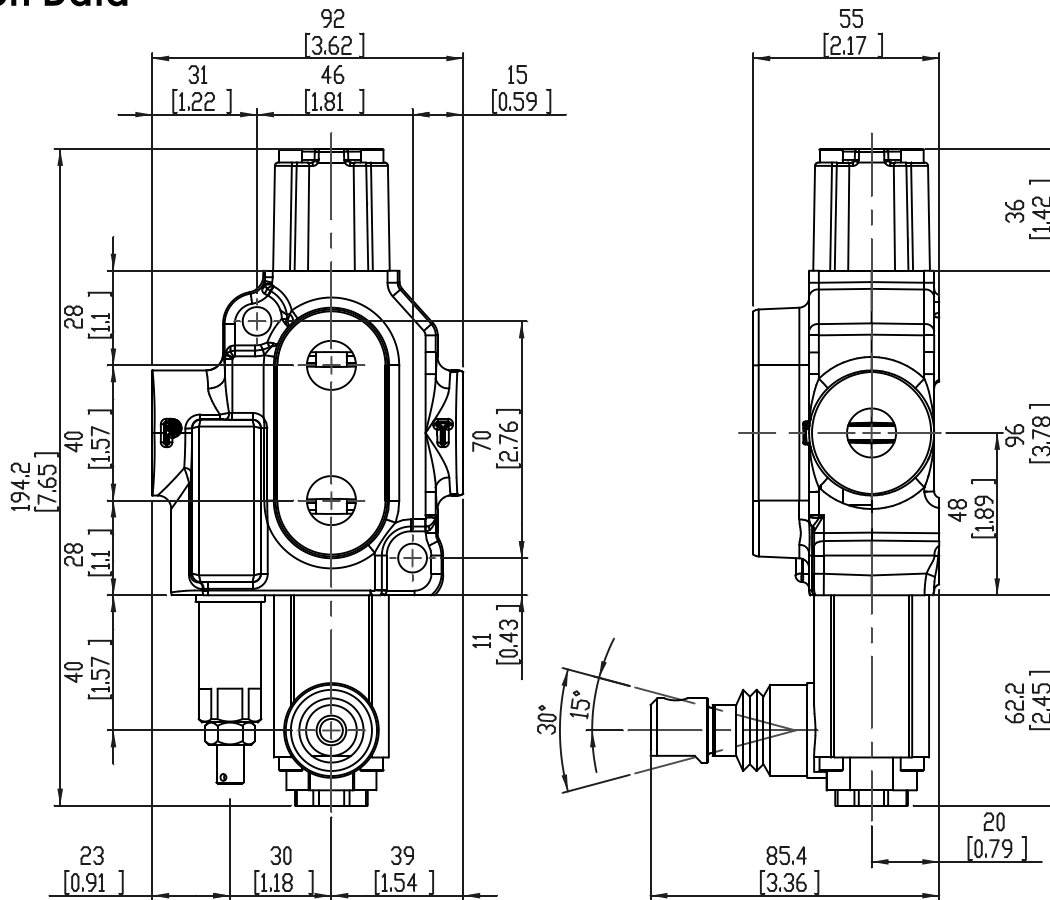
## Pos 3, Adjustable direct relief valve setting

Code	Standard Pressure setting bar(psi)	Range of adjustment bar(psi)
<b>07</b>	70 (1000)	40~80 (580~1150)
<b>14</b>	140 (2000)	63~200 (900~2900)
<b>21</b>	210 (3000)	160~250 (2300~3570)
<b>SV</b>	Blanking plug	



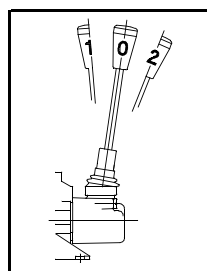
## Dimension Data

mm(inch)



### Pos 4, Spool action

Code	Spool control
<b>A</b>	
<b>B</b>	
<b>C</b>	
<b>D</b>	

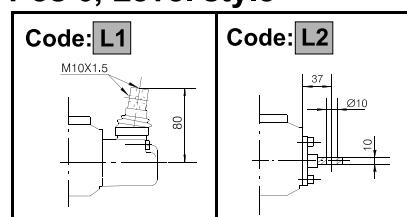


Symbol features	
	Initial hand lever position
	Spring return position of hand lever
	Hand lever in detent position

### Pos 5, Spool variation

Code	Spool type
<b>1</b>	
<b>2</b>	

### Pos 6, Level style



### How to order

Body Features						
MB2/	2	3	4	5	6	

### Example

MB2/	G	14	A	1	L1
------	---	----	---	---	----

Pos 1	Type
Pos 2	Type of thread
Pos 3	Relief valve setting
Pos 4	Spool action
Pos 5	Spool variation
Pos 6	Level style